

a

DUAL AXIS ACCELEROMETER EVALUATION BOARD FOR THE ADXL150 AND ADXL250 ACCELEROMETERS

ADXL250EB

GENERAL DESCRIPTION

The ADXL250EB is a simple evaluation board that contains a surface mounted, dual axis ± 50 g ADXL250JQC accelerometer, and which allows you to quickly evaluate its performance. The ADXL250EB has a 7 pin 0.1 inch spaced header for access to all power and signal lines that you may attach to a prototyping board (breadboard) or wire via a standard plug. A small prototyping area is available (24 holes) and two holes are provided for mechanical attachment of the ADXL250EB to your application.

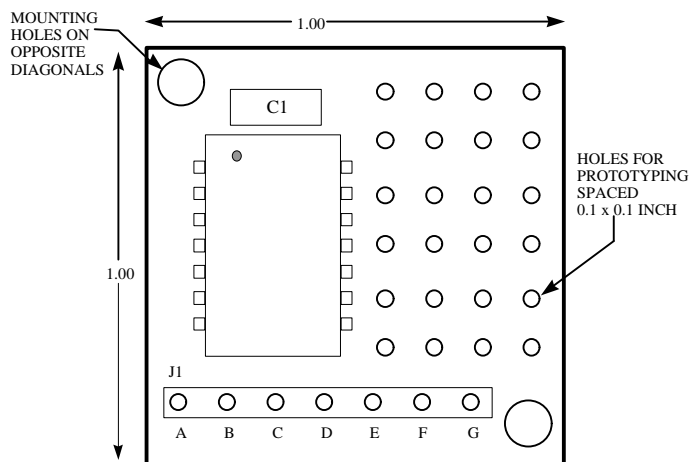
SPECIAL NOTES ON HANDLING

Note that the ADXL250EB is not reverse polarity protected. Reversing the +Vsupply and Common pins will damage the ADXL250. Dropping the ADXL250EB on a hard surface may generate several thousand g of acceleration, enough to damage the accelerometer. Please refer to the ADXL250 data sheet for information on shock survivability.

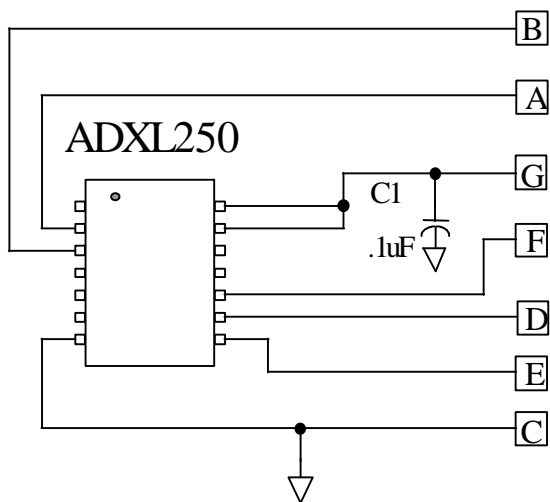
CIRCUIT DESCRIPTION

The schematic and parts list of the ADXL250EB are shown below. Refer to the ADXL250 data sheet for a complete description of the operation of the accelerometer.

ADXL250EB Part Layout (Top View)



ADXL250EB Pin-Out Description



| Description | ADXL250EB | ADXL250 |
|-----------------|-----------|---------|
| Y Out | B | 3 |
| Zero g adjust Y | A | 2 |
| Vs | G | 14 |
| Xout | F | 10 |
| Self test | D | 9 |
| Zero g adjust X | E | 8 |
| Common | C | 7 |